

BRCA1(C61G)

Catalog Number: 26319

Gene Symbol: BRCA1, BRCC1, IRIS, PNCA4, PPP1R53, PSCP

Description: Anti-BRCA1(C61G) Mouse Monoclonal Antibody

Background: BRCA1 is normally expressed in cells of breast and other tissues, where it helps repair damaged DNA or destroy cells if DNA cannot be repaired. It is involved in the repair of chromosomal damage with an important role in the error-free repair of DNA double-strand breaks. If BRCA1 itself is damaged by a BRCA1 mutation, damaged DNA is not repaired properly, and this increases the risk for breast cancer.

Immunogen: A synthetic peptide from the internal region of BRCA1 which includes the mutation of C61G, human origin.

Tested Applications: ELISA, WB, IHC

Recommended Dilutions:

ELISA: 1:1000-1:2000

WB: 1:500-1:1000

IHC: 1:50-1:100

Concentration: 1 mg/ml

Host: Mouse

Clonality: Monoclonal

Isotype: IgG

Purity: Purified from ascites

Format: Liquid

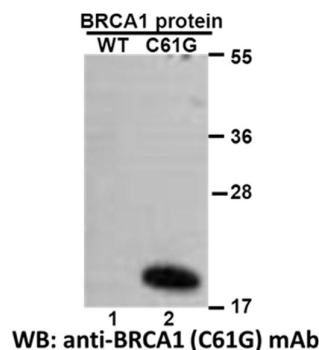
Preservative: No

Constituents: PBS (without Mg²⁺ and Ca²⁺), pH7.4, 150 mM NaCl, 50% glycerol

Species Reactivity: Recognizes C61G mutant, but not wild-type BRCA1 of vertebrates

Storage Conditions: Store at -20°C. Avoid repeated freezing and thawing

Western blot:



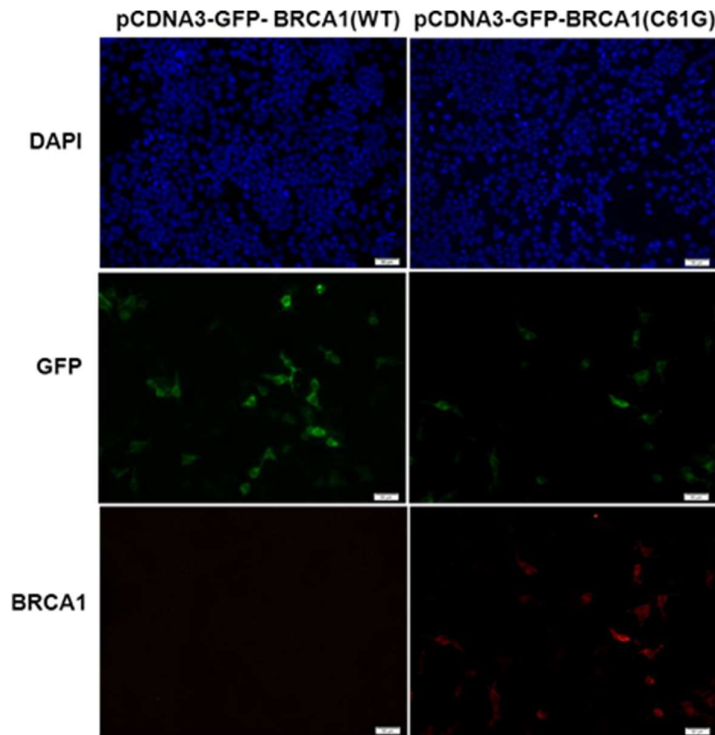
Western blot analysis of recombinant BRCA1 (C61G) and wild type proteins.

Purified His-tagged BRCA1 (C61G) protein (lane2) and corresponding wild-type protein (lane1) were blotted with anti-BRCA1(C61G) monoclonal antibody (Cat. # 26319)

FOR RESEARCH USE ONLY. NOT FOR DIAGNOSTIC APPLICATIONS

A helping hand for your research

Immunofluorescence:



Immunofluorescence of cells expressing BRCA1 proteins with anti-BRCA1 (C61G) antibody.

HEK293T cells were transfected with pCDNA3-GFP-BRCA1 (WT) plasmid (left column) or pCDNA3-GFP-BRCA1 (C61G) plasmid (right column), then fixed and stained with anti-BRCA1 (C61G) monoclonal antibody (Cat. # 26319).

FOR RESEARCH USE ONLY. NOT FOR DIAGNOSTIC APPLICATIONS